



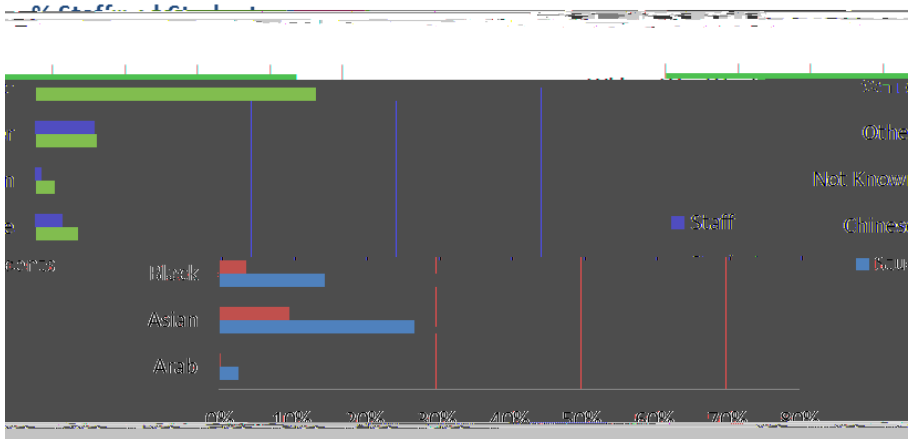
	814	65	26	905
	879	60	21	960
	387	22	12	421
	1,819	188	94	2,101
	0	0	21	21
	912	246	40	1,198
	1,109	23	32	1,164
	0	19	8	27
	1,750	98	39	1,887
	601	223	21	845

11	40	27	78
14	1	11	26
14	23	8	45
19	267	36	322
0	0	8	8
126	116	24	266
24	25	28	77
0	18	2	20
32	74	39	145
5	62	31	98

44	37	16	97
458	351	129	938
57	48	42	147
301	459	187	947
0	0	15	15
48	46	14	108
110	71	68	249
0	8	7	15
177	110	46	333
13	17	11	41

Academic	600	60	660
Hourly Paid Lecturers/ Demonstrators	0	414	414
Research	147	42	189

Non- Academic			
	Full - Time	Part-Time	Total
Ancillary	11	98	109
Casual	3	108	111
Clerical/Secreterial	269	82	351
Maintenance	33	0	33
Miscellaneous	46	13	59
Professional	377	75	452
Technical	70	6	76
Total	809	382	1,191



Funding Body Grants	39.7	21.6
Tuition Fees and Education Grants	82.6	45.0
Research Grants and Contracts	19.8	10.8
Other Income	40.9	22.3
Endowment and Investment Income	0.5	0.3

Research Councils	6.8	34
UK Charities	0.8	4
Industry and Commerce	3.8	19
Governmental	7.8	40
Other Sources	0.6	3

Financial data are for the year ending 31 July 2013 as published in University Financial Statement 2012-13

<http://www.brunel.ac.uk/about/campus/financial-statements>

Staff numbers are as recorded on 1 December 2013 and are headcount, in all cases.

Student numbers are as recorded on 1 December 2013 and are headcount, in all cases. Full time data includes students on sandwich placements.

University Website: <http://www.brunel.ac.uk>



Produced by the Planning & Policy Office, Brunel University,
Kingston Lane, Uxbridge, Middlesex, UB8 3PH
Tel: 01895 274000
Email: planning@brunel.ac.uk